

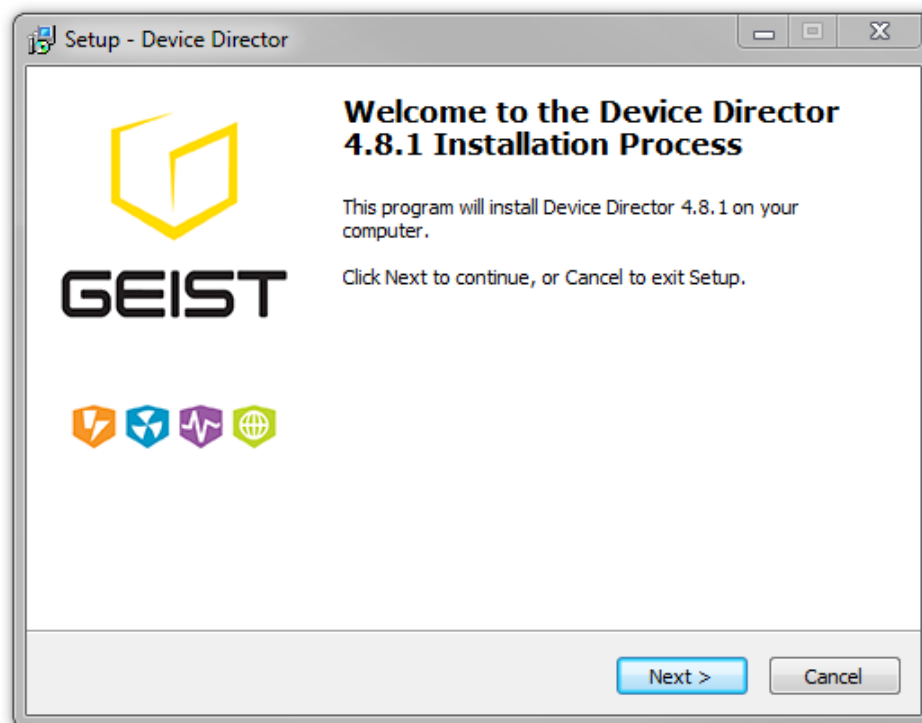


Device Director Quick Start Guide

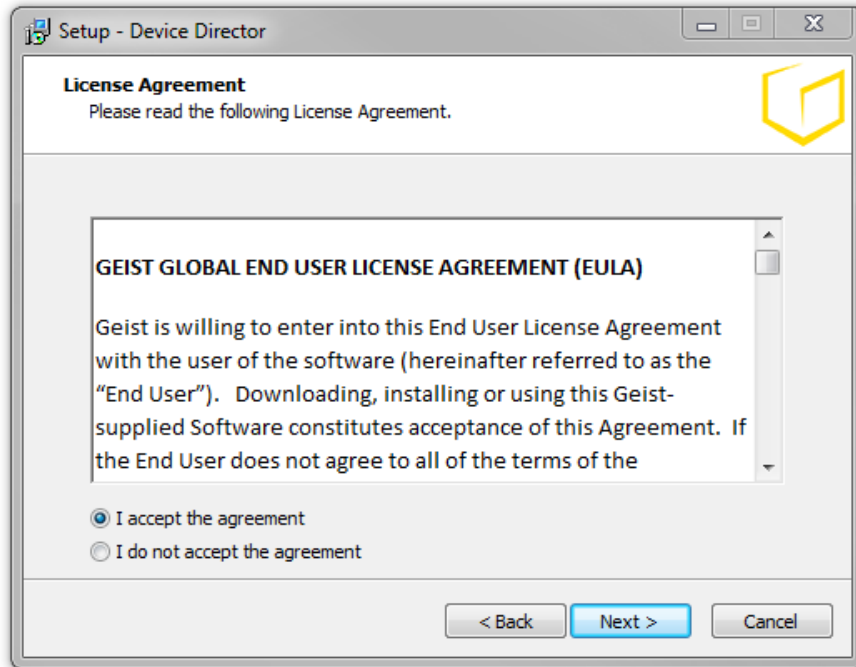
Thank you for downloading Device Director. This guide outlines step-by-step installation and configuration guidelines. Additional support information is available online at geistglobal.com.

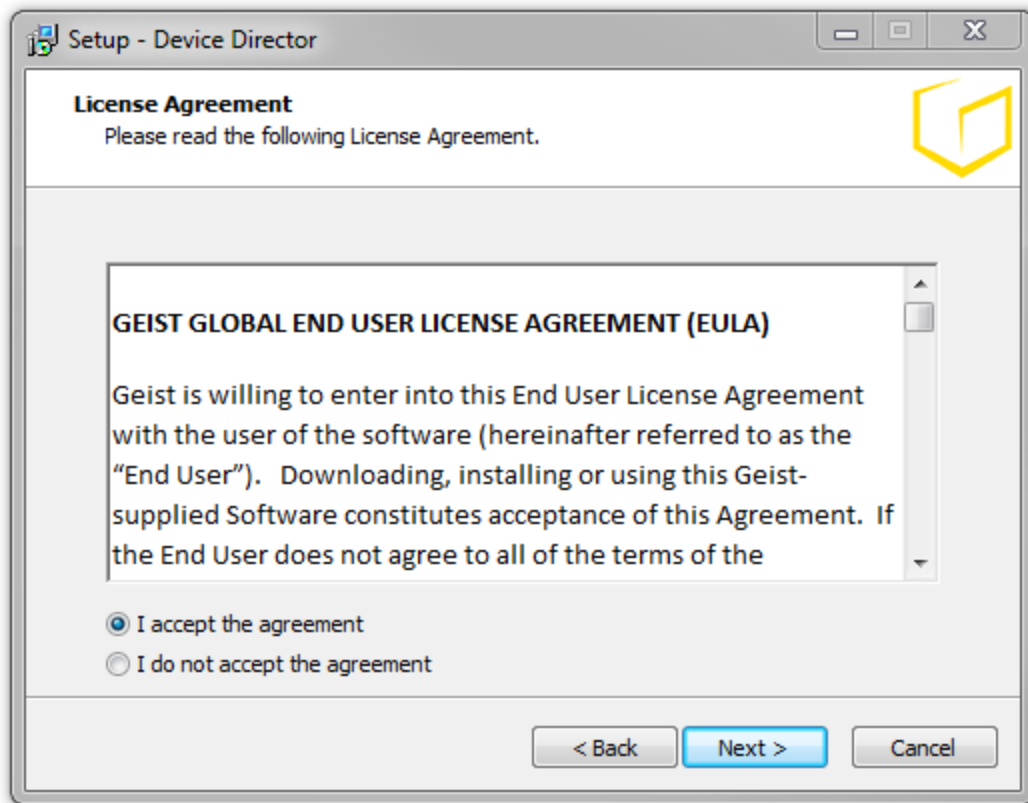
Installation

1. To install Device Director, double-click on your executable file (i.e. "DeviceDirector-4.8.1_setup_x64.exe").
2. Welcome
 - a. On the first screen, click "Next".

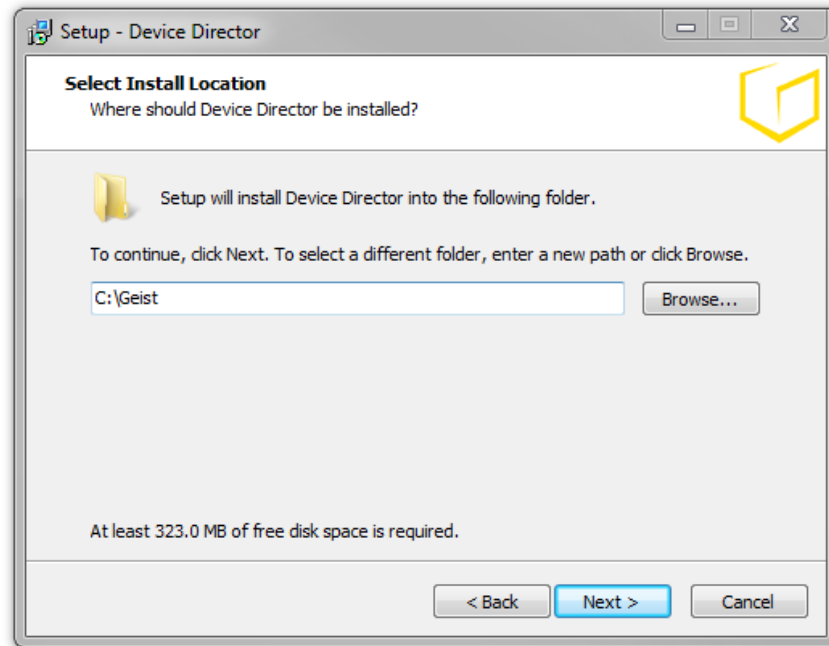


3. License Agreement
 - a. Read the Geist Global End User License Agreement (EULA). Once you agree, select “I accept the agreement” and click “Next”.

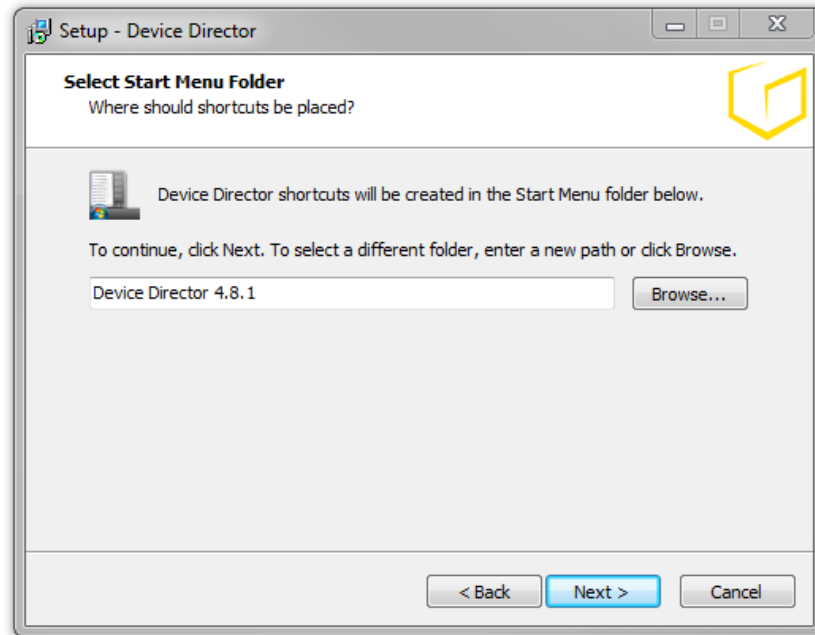




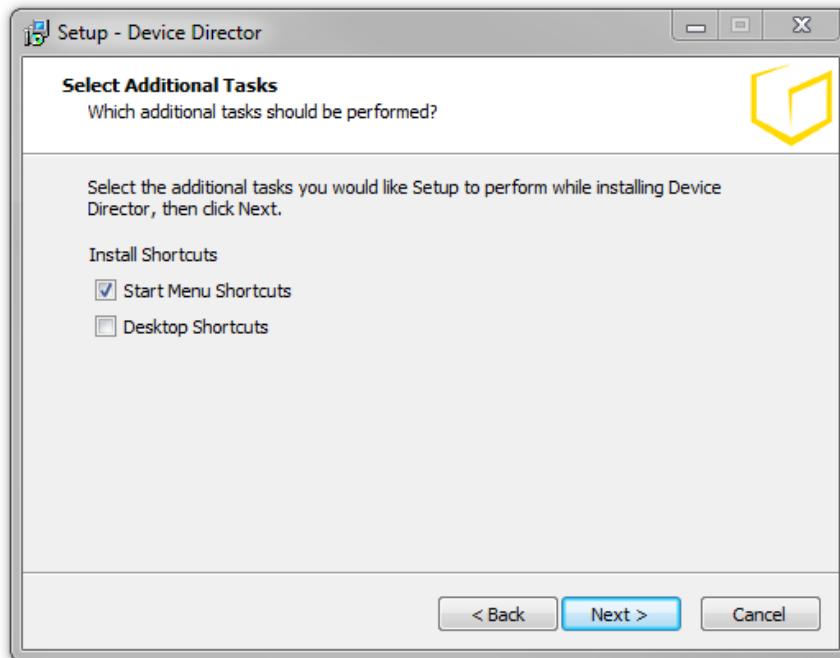
4. Select Install Location
 - a. If you wish to install Device Director to another location, type the location in the text box or use the "Browse" button to select a different directory.
 - b. It is recommended to use the default installation directory.
 - c. Select "Next".



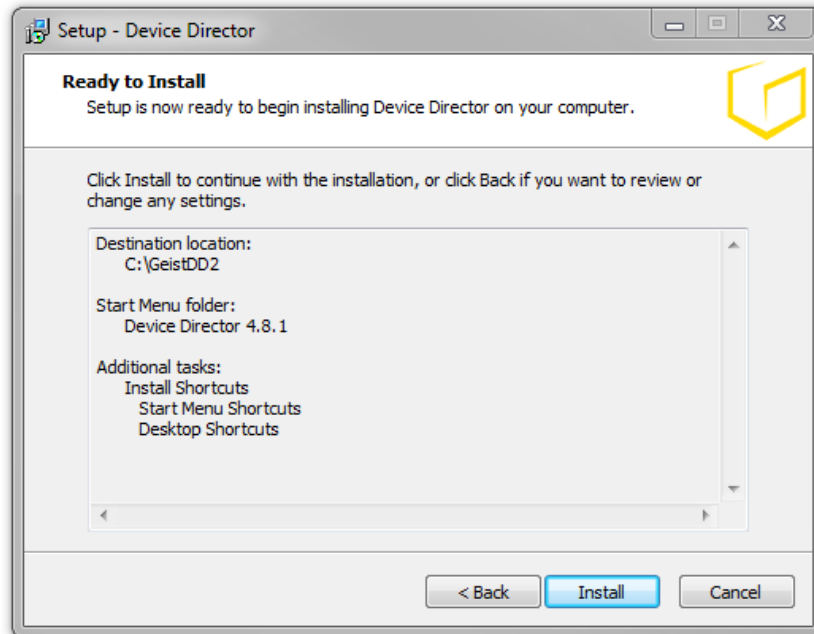
5. Select Start Menu Folder
 - a. If you wish to install Device Director shortcuts to another location, type the location in the text box or use the “Browse” button to select a different directory.
 - b. It is recommended to use the default start menu folder.
 - c. Select “Next”.



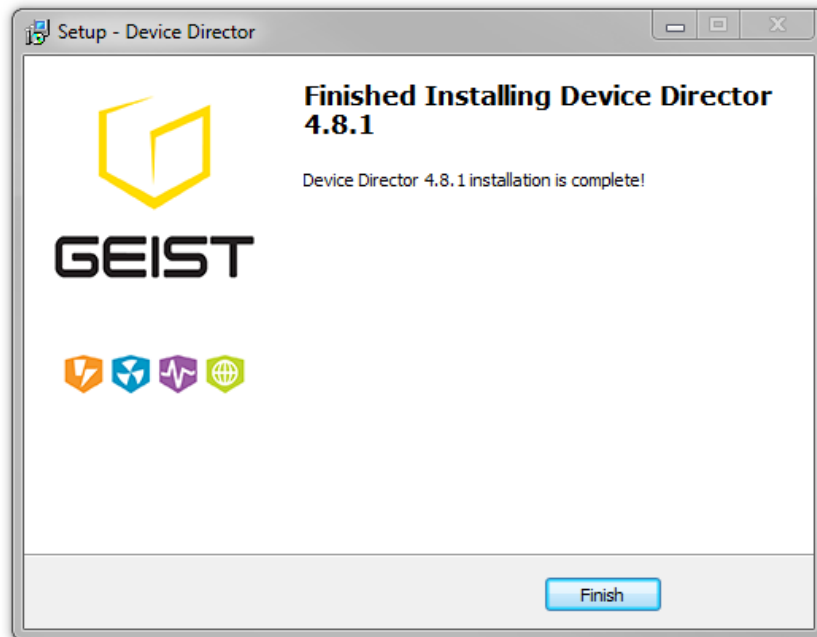
6. Select Additional Tasks
 - a. Select whether you would like Start Menu Shortcuts and/or Desktop shortcuts.
 - b. Click "Next".



7. Ready to Install
 - a. Review your options. Click “Back” and revise your options, if needed.
 - b. If options are correct, click “Install”.



8. Finished
 - a. Once installation is complete, click “Finish”.



Installation of Device Director is complete. To run Device Director, double click on the shortcut on your desktop or in your start menu.

Technical Support

<http://geistglobal.com>

Americas

- +1 888 630 4445

Europe and Middle East

- From within the UK 0845 026 3853
- From abroad +44 845 026 3853

Asia

- English +1 888 630 4445 (US number)
- Chinese +86 755 8663 9505

Email: support@geistglobal.com or contact your distributor

Technical Support Form: <http://www.geistglobal.com/Tech-Support>