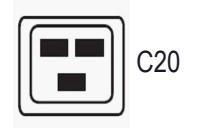
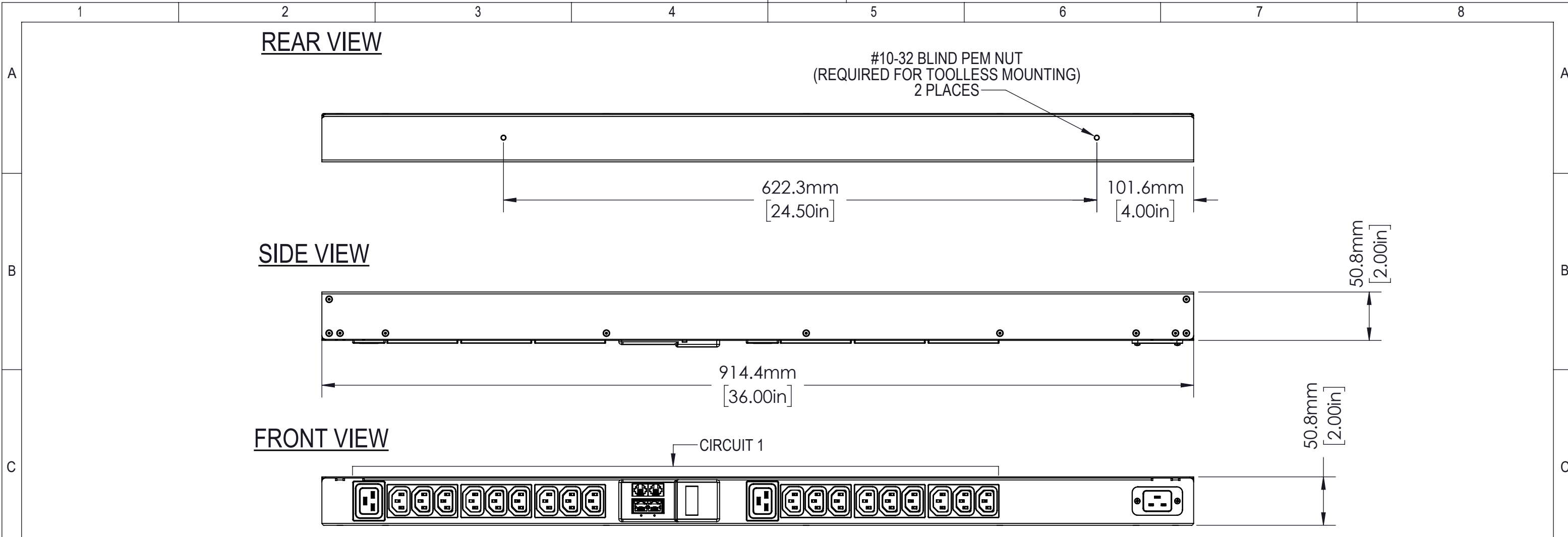


Disclosure and photocopying of this document, exploitation and communication of its contents are not permitted, unless permission is expressly granted. All rights are reserved.

Weitergabe sowie Vervielfältigung dieser Unterlage, Verwertung und Mitteilung ihres Inhalts nicht gestattet, soweit nicht ausdrücklich zugestanden. Alle Rechte vorbehalten.



AGENCY COMPLIANCE:  
 CE Marked  
 RoHS Compliant  
 Complies with EN 55032 and EN 55024  
 Complies with IEC 60950-1 (CB Certificate Available)

ENVIRONMENTAL RATING:  
 Maximum Operating Temperature: 60C / 140F

NOTES  
 UNIT DIMENSIONS: 36in x 2.0in x 2.0in / 914mm x 51mm x 51mm  
 SHIPPED WEIGHT: 10lbs (4.54kg)  
 SHIPPING DIMENSIONS: 41in x 5in x 3in / 1042mm x 127mm x 77mm  
 Toolless Mounting Hardware 24.5in / 622mm, and 7938 Vertical Mounting Bracket Kit

OUTPUT POWER

CIRCUIT	PHASE	RECEPTACLE TYPE (QUANTITY)	VOLTAGE (V)	MAX. CONTINUOUS AMPS (A)	
				PER RECEPTACLE	PER CIRCUIT
1	L1	18xC13, 2xC19	100-240	10/16	16

INPUT POWER

INPUT CORD	INPUT SOCKET	WIRE COUNT	FREQUENCY (Hz)	VOLTAGE (V)	RATED AMPS (A)	MAX. CONT. AMPS (A)
None	IEC 60320 C20	1/N/PE, 2/PE	50/60	100-240	16	16

METERING PARAMETER	MEASUREMENT ACCURACY
VOLTAGE	±1%
CURRENT	±1% - Input Current
	±2% - Circuit/Breaker Current

		Allgemeintoleranzen General tolerances		Oberfläche Finish		Werkstoff / Material		Gewicht: Weight: -	
		-		-		-		-	
		Date		Name		Bezeichnung / Description			
		22/10/18		SW		Monitored, Vertical, 16A, 230V, (18) C13 / (2) C19			
		Checked		-		-			
		Approved		-		-			
		-		-		-			
Rev.		Change		Date		Name		Zeichnungs-Nr. / Drawing no.	
-		-		-		-		<b>VP8858</b>	
-		-		-		-		Maßstab Scale	
-		-		-		-		<b>1:4</b>	
-		-		-		-		Verwendet in / Used in	
-		-		-		-		Blatt/Sheet	
-		-		-		-		<b>1/1</b>	