



## Environet

Environet is a comprehensive DCIM solution which collects the data you need to run your data centers efficiently. With visibility and management of the data center environment, Environet transforms complexity into simplicity. Access to real-time, holistic information empowers you to proactively manage moves, adds and changes. Environet's interactive interface delivers critical information, so intelligent decisions are made with speed and confidence.

## Features and Benefits

### Intuitive Interface

Full HTML compatibility gives users convenient access to Environet from any standard browser, via desktop and mobile device making information readily available.

### Real-time Monitoring

Capture data from critical devices within seconds, allowing for on-time alarms and alerts to potential issues.

### Predictive Analytics

Environet maintains a comprehensive database of information that can be utilized in a variety of reports, allowing users to take preventative measures based on accurate historical data.

### Capacity Planning

Knowing where power, cooling and rack space is available is a necessity in the data center. Environet provides easy access to current availability while also displaying when and where space is running low.

### Tenant Management

Environet provides a dedicated feature to the management of tenants, groups and departments. Receive quick visualization and ability to export power and other key metric data, both point-in-time and over a specified period of time.

### Scalability

From a single site to multiple facilities, users can access each location within one interface. Cross-site navigation from edge sites to full enterprise or hyperscale facilities allows for informed decision making.

### Device Integration

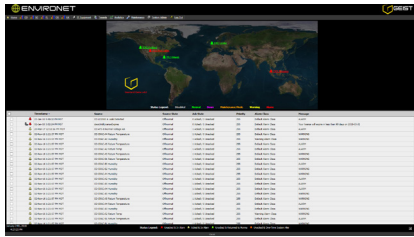
Environet delivers a comprehensive view of the data center by communicating with any device which uses standard data center protocols, giving you peace of mind that all critical equipment is properly monitored.

### Racks and Assets

IT management tools give you the ability to know where space is available and where devices reside, making space and power management more effective.

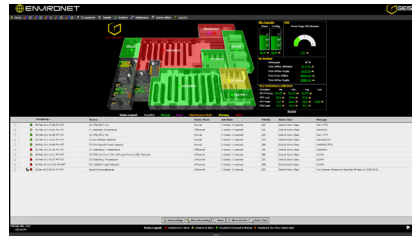


## Interactive Views



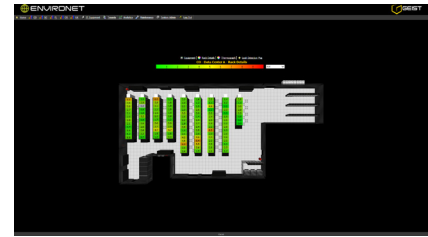
### Global View

Shows an at-a-glance view of each facility, allowing for visualization of each site's status. If a site is in a state outside of normal, quick action can be taken to determine and resolve potential issues.



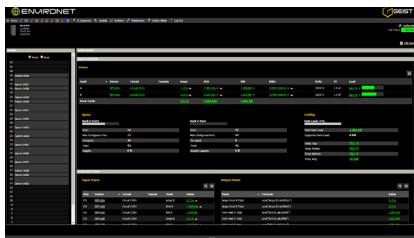
### Site View

Displays a granular level of detail for an individual site, which includes: graphical site layout, per room status, alarm statuses and pre-defined key performance indicators.



### Floor Plan and Details View

Gives a quick status of each rack and device in the data center, along with metrics for space, power and cooling.



### Rack View

Provides detail for each individual rack, including: associated power tenants, a visual of assets in the rack (front/rear), available space and calculated data points (collections).



### Device View

Each device has a unique set of data points that are valuable. This view gives a detailed list of the points and visuals of key metrics.



### BCM View

Presents a visual for what would be viewed as if standing in front of an RPP, while also summarizing all available power data (Amps, Watts, kWh, etc.) for every circuit.

## Tools

- Interactive Power One-Line Diagrams
- Energy Cost Analysis
- Custom Reports
- Custom Views
- Key Performance Indicators
- Maintenance Management
- PDU and DCiE
- Import/Export Capabilities
- Control Capabilities

## Supported Equipment

- Rack PDUs
- Room Level UPS and PDU
- Battery Strings
- RPPs and BCMs
- In-Row Cooling Units
- Room Cooling Units
- Chilled Water Systems
- Switch Gear
- Generators
- ATs and STSs
- Fire Panels
- Leak Detection
- Utility Power Meters