



Expertise

In this swiftly changing, technology driven industry, plenty of companies are forced to react to remain relevant. At Geist, we stay ahead of our competition by constantly, actively evolving to meet the demands of our customers. Through technical expertise and skilled engineering, we provide leading-edge products and comprehensive solutions for our trailblazing customers.

Partnership

Top to bottom at Geist, every employee is ready and eager to help solve our customers' problems. Accessible and responsive, our team is committed to delivering exceptional personal service and support every day — fulfilling our mission of providing a premier customer experience.

Tailored

Geist has been customizing cost-effective solutions for clients for more than 60 years. It's part of our culture. Every customer offers unique challenges and opportunities. We are committed to quickly meet each specific customer need with technological savvy and unbeatable detail.

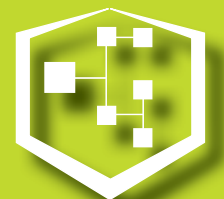
Quality

We are dedicated to developing the highest performing products and solutions in the industry. From hand-soldered connections in our power strips, to enterprise level DCiM systems, we consistently exceed our customer's expectations.

1821 Yolande Ave, Lincoln, NE 68521

800.432.3219 402.474.3400

www.geistglobal.com



manage

Environet Management

Environet goes beyond typical monitoring systems by surpassing reactive or even proactive methods to provide users with predictive feature sets, letting them know about potential problems before they become catastrophic.

Designed to simplify monitoring by integrating multiple communication protocols into one comprehensive system, Environet is the ultimate solution for your management needs. Environet's graphically rich interface and intuitive design makes monitoring the data center easier than ever before. With SNMP, Modbus, BACnet, and LONWorks capability, Environet can support multiple types of equipment from many manufacturers. Environet can be accessed remotely through its Web-based user interface and can send immediate notification if an alarm condition is triggered.

Customizable

Environet graphically details your mission critical environment, from an entire building complex to the smallest component within it. Graphics, calculations, sequences, and more can all be customized to fit your facility. Pick from Environet's feature list and build a system that meets your unique needs.



Cohesive

Environet integrates with numerous communication protocols allowing the system to work efficiently with existing equipment. Support for a wide variety of manufacturers makes it easy to integrate with your facility.

Comprehensive

Whether you have a single location or multiple locations around the globe, Environet lets you monitor all your mission critical components from anywhere. Using Environet's drill-down capabilities, you can track statuses of an enterprise, drill into an individual facility, or view a single point of information on all within the same application.



Cost-Effective

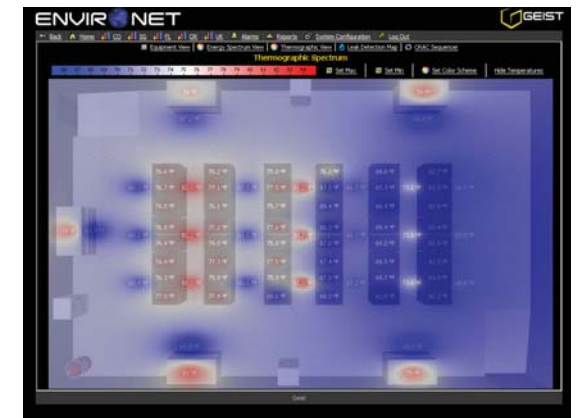
Environet's flexible design expedites installations, lowers costs, and minimizes maintenance. With Environet at work, you can identify potential issues that can result in lost revenue and clients.

Client Testimonials

"Environet allows us to add modular components to meet our needs as we grow. Some of the competing products carried a higher initial cost that consumed additional capital resources up front." — V.P. of Technical Operations

"There is a lot of flexibility in the product's ability to store data, warn, and alarm. These features allow us to perform trend analysis and to be proactive rather than reactive in monitoring growth." — Director of Data Center Operations

"It's a phenomenal product, able to scale quickly and easily, and priced well. When we work with global projects we want to make it as easy as we can." — Sr. Operations Manager



Features & Benefits

Automated Reports

Automatically generates required reports saving you time, while decreasing human error associated with running reports.

Control Enabled

Increases facility efficiency allowing you to realize your return on investment more fully.

Custom Views of Data

Shows the most pertinent information based on your monitoring needs for faster, more efficient data collection.

Extensive Trend & Historical Records

No more manual measurements! Saves time by automatically collecting and logging important data points.

Full Alarm Management

Gives you the flexibility to manage alarms remotely so no alarm goes unacknowledged.

Integration with Major BMS and NMS

Easily works with current systems so there is no need to replace expensive equipment already installed.

Industry Leading Management Features

Monitor your facility proactively rather than reactively. The extensive tool set allows you to recognize problem areas before they cause downtime.

Multi-site Capable

Gives you a holistic view of your enterprise for maximum enterprise efficiency.

Scalable

From 10s of points to 10s of thousands of points, Environet grows with your facility. Additional data points are easily added when you need to expand.

User Based Views & Permissions

Increases efficiency by personalizing what information is displayed when you log in.

Vendor Neutral

Works with existing equipment so you get reliable, efficient monitoring results.

Interactive Views

Global View

Shows the status of all your facilities around the world.

Dashboard View

Displays the top level of a facility. Includes: alarm sources, facility layout, your company brand, weather conditions, and key performance indicators.

Equipment View

Represents each device with six different status colors for at a glance monitoring.

Energy Spectrum View

Graphically represents the power density of each rack on a color changing floor plan.

Thermographic View

Displays floor plans with color changing "hot spots" that represent temperature values.

Power One-Line

Shows each piece of equipment on your power one-line drawing. Each element has associated status, capacity, connectivity, and more.

Side by Side Like Equipment Comparisons

Compare information regarding capacity, load balancing, efficiencies, and more across multiple pieces of similar equipment.

BMS Integration / HVAC Views

Integrates fully with all major building management systems for display, trend, and alarm on the collected information.

Event Analysis Reports

See all data associated and recorded for a given event. View data before, during, and after the event occurred.

Racknet Management

A single point of access for managing mission critical hardware.

The Racknet product line provides a comprehensive set of products for managing IT and white space with a single point of integration. The intuitive interface allows for easy drag and drop configurations, giving complete in-house customization capability. This comprehensive product line auto discovers SNMP devices, making installation and set-up fast and simple. The aggregated results collected across your facilities provide a holistic view of your facility's efficiency.

Racknet is a standalone appliance that requires no additional hardware. It is shipped pre-installed on a server for quick set up. The Web interface allows users to view and access the system remotely using any standard Web browser.



Features & Benefits

Aggregated Views of Data & Alarming

Displays one comprehensive view of all monitored equipment with a combination of preconfigured and user defined graphics. User defined thresholds for quick alarm notification including three escalation levels.

Reporting & Histories

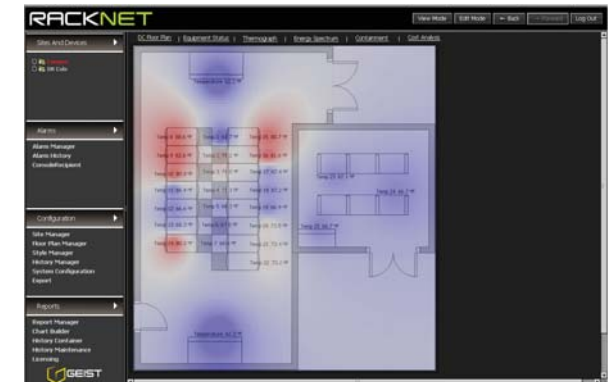
Build and generate unique reports based on individual requirements (e.g., Customer Monthly Power Usage, High/Low/Average Temperatures, Monthly Capacities, Monthly PUE/DCIE). Visually display data in various chart types for easy interpretation.

Math Functions & Collections

Aggregate data from individual points or groups of points to create user defined views of data such as highs, lows, averages, costs, usages, etc. Associate functions with dashboards and other applicable views.

Single Access Point for Integration

Racknet provides output of collected data via SNMP and BACnet. Racknet also has a robust programming API which increases integration capabilities with larger management systems.



Alarms & Tools

- » Global Alarm Console
- » Local Dashboard Alarm Consoles
- » Alarm Notes and Instructions
- » Drill Down Alarm Grouping
- » User-defined Alarm Thresholds
- » E-mail, SNMP Trap, or SMS Notification
- » Power One-Line Diagrams
- » Power Capacity Planning
- » Energy Cost Analysis
- » Documentation Storage
- » Custom Reporting
- » Custom Views
- » Key Performance Indicators
- » Unique Views Per User
- » PUE / DCIE

Supported Equipment

- » Chilled Water Systems
- » CRAC Units
- » Utility Power Meters
- » Switch Gear
- » Generators
- » Fuel Systems
- » ATs, STSs
- » UPSs, PDUs, RPPs, BCMs
- » Rack PDUs
- » Battery Strings
- » Leak Detection
- » Fire Panels
- » And more!

Communication Protocols

- » SNMP
- » Modbus
- » BACnet
- » LONworks
- » Niagara
- » Hardwired I/O



The Racknet product line has three models to provide increased flexibility for users.

Racknet-Aggregator (Racknet-A)

Racknet-A connects to GNET via 48 network ports to collect critical data from Geist products. Data can then be accessed easily from one location.

Racknet-Server (Racknet-S)

Racknet-S gathers data from Geist products as well as third party equipment. It also allows users to fully customize graphics and collections.

Racknet-Aggregator Server (Racknet-AS)

Racknet-AS includes the full feature set of the Racknet product line. It can be used with third party equipment, has 48 network port console for direct connection and includes full customization.



	Racknet-A	Racknet-AS	Racknet-S
Support for all Geist hardware	X	X	X
Support for all 3rd party power strips		X	X
Support for all 3rd party SNMP devices		X	X
48 Console IP ports for GNET connections	X	X	
Appliance form factor (server + software)	X	X	X
Auto configuration of IP address for connected equipment (DHCP Server)	X	X	
SNMP and / or BACnet output of all collected data	X	X	X
Support for up to 1,000 devices and 30,000 data points	X	X	X
Geist equipment global firmware updates	X	X	X
Alarm, Trend, Report on all collected data	X	X	X
User defined graphical views		X	X
User defined collection objects for associations of data		X	X
HTTP pass-through of all GNET devices	X	X	

Environet vs. Racknet Comparison

Environet

Environet is a custom built, fully scalable system with a single point of access for all your monitoring needs. It is an enterprise driven system with the primary focus of integrating many systems from multiple locations for complete visibility. With Environet, you do not have to worry about design, installation, configuration, or system maintenance. Geist designs, programs, installs, and provides support for all Environet systems—they are 100% turnkey.

- » Enterprise scalable
- » Complete tool sets
- » Custom built feature sets
- » Virtually unlimited capacity
- » Set-up and maintained for you

Racknet Product Family

Racknet is designed primarily to give visualization to rack level data and white space, although it is capable of integrating with other monitoring systems. Racknet can be set-up and configured by users or by a professional installer, but is capable of being 100% user-maintained. Racknet uses an SNMP auto discovery tool to make configuration fast and easy, while template devices make adding equipment to the system simple. Racknet is shipped pre-installed on a server for quick set up.

- » White space and rack level monitoring
- » Extensive feature set
- » Capable of custom graphics and tools
- » Up to 20,000 points
- » User maintainable

	Environet	Racknet
Capacity		
Number of Points	Unlimited	Up to 20,000
Scalability	Enterprise	Multi-device
Communication		
SNMP	X	X
BACnet	X	with converter
Modbus	X	with converter
LONworks	X	with converter
Hardwired I/O	X	with converter
Design & Configuration		
System Configuration	turnkey	user-capable
Vendor Neutral	X	X
Consulting Services	X	additional
Professional Installation	X	additional
Support Contract	X	additional
Custom Built Features	X	
Features		
Chart Builder	X	X
Notification & Alarms	X	X
Report Manager	X	X
Energy Cost Analysis	X	capable
Power One Line	X	capable
PUE/DCIE	X	capable
Unique Floor Plans & Views	X	capable
Key Performance Indicators	X	capable
Power Capacity Planning	X	capable
Integration		
Raised Floor/White Space	X	X
Electrical/Mechanical Rooms	X	capable
Fire Suppression Systems	X	capable
Building Management Systems	X	capable
Network Management Systems	X	capable
Security Systems	X	capable
Other Custom Systems	X	capable