



Device Director Quick Start Guide

geistglobal.com



Table of Contents

Introduction	3
Welcome.....	3
Chapter 1 - Overview	6
Chapter 2 - Installation	6
Chapter 3 - Technical Support	13

Introduction

Welcome

Notice to Users

Geist, a division of PCE, Inc., reserves the right to make changes to this document without notice to any user or reseller of this product. Geist, a division of PCE, Inc., also reserves the right to substitute or terminate distribution of this document, with no obligation to notify any person or party of such substitutions or terminations.

Copyrights

© 2017 - Geist, a division of
PCE, Inc. All Rights
Reserved

Trademarks

All Trademarks contained herein are registered to Geist, a division of PCE, Inc.

Use and Disclosure Restrictions

The software and documentation contained in this publication are copyrighted materials.

Recovery Act Buy American

Geist products adhere to the Buy American provisions of the American Recovery and Reinvestment Act of 2009 (Recovery Act). All Geist goods manufactured in our Lincoln, Nebraska, plant have undergone substantial transformation during production.

Trade Agreements Act (TAA)

Geist goods manufactured in our Lincoln, Nebraska, plant have undergone substantial transformation during production. These Geist products adhere to U.S. Trade Agreements Act and can be supplied for GSA Schedules and other government contracts.

Geist Policy on Conflict Minerals

This document details Geist's corporate policy regarding the use of conflict minerals. The policy expressed in this document should be considered to cover the Geist and Geist Europe divisions of PCE Inc.

Section 1502 of the Dodd-Frank Act which was passed by the US Congress in 2010 requires certain companies to annually disclose their use of conflict minerals. Conflict minerals covered under this act include tantalum, tin, tungsten, and gold.

Although Geist is not directly subjected to the requirements of the Dodd-Frank Act, Geist recognizes that all companies within the electronics manufacturing industry supply chain are impacted by this legislation. Geist supports the intent of the law, which is the reduction of violence within the Democratic Republic of the Congo and will take several actions to both advance the goals of the Dodd-Frank Act and to provide exceptional support to our customers.

- Geist will work with our direct suppliers to identify purchased components and materials that contain tin, tantalum, tungsten or gold.
- Geist will work with our direct suppliers to trace sources of any tin, tantalum, tungsten or gold used in our products back to the smelter.
- Geist will document our efforts to trace tin, tantalum, tungsten, and gold minerals back to the smelter and will accurately report the results to our customers.
- Geist will continue to monitor industry progress in identifying conflict-free smelters and will adjust corporate policy as the electronics supply chain becomes more fully documented.

Geist will not require that our direct suppliers source only conflict-free minerals until an adequate number of smelters has been reliably identified and audited by The Electronic Industry Citizenship Coalition (EICC) and the Global e-Sustainability Initiative (GeSI) to service the electronic industry supply chain. Mandating a conflict-free supply chain before an adequate number of smelters has been identified will prohibit the use of all tin, tantalum, tungsten, and gold originating in the Democratic Republic of the Congo and surrounding countries. This prohibition would cut off the sole income source for many artisanal miners within the region and may result in increased violence within the Democratic Republic of the Congo in direct opposition to the goals of the Dodd-Frank Act. Geist will work continuously with our direct suppliers in order to annually increase the percentage of documented conflict-free minerals that are used in our products until all products can be certified as conflict-free.

WEEE Declaration

Geist Europe is obligated to finance the cost of the collection, treatment, recovery and environmentally sound disposal of all products sold by Geist Europe into the UK market this includes:

- New WEEE (displaying ‘the crossed out wheeled bin symbol’) that Geist Europe has placed onto the market after the 13th August 2005.
- Historic WEEE (not displaying ‘the crossed out wheeled bin symbol’), when Geist Europe is supplying new WEEE that is intended to replace the historic WEEE and is of equivalent type or fulfills the same function even if the historic WEEE was manufactured by a third party.

Please contact Geist Europe on 01823 275100 for further details or to arrange collection. (UK Only)

Document Usage

All reasonable efforts have been made to assure the accuracy of this document from any technical or typographical errors or omissions. Geist, a division of PCE, Inc., and its affiliates disclaim responsibility for any labor, materials, or costs incurred as a result of usage of this document. Nor shall Geist, a division of PCE, Inc., and its affiliates be liable for any damages, inclusive of loss of profits or data, arising from the use of or in connection with this document.

Geist, a division of PCE, Inc., reserves the right to make changes to this document without notice to any user or reseller of this product. Geist, a division of PCE, Inc., also reserves the right to substitute or terminate distribution of this document, with no obligation to notify any person or party of such substitutions or terminations.

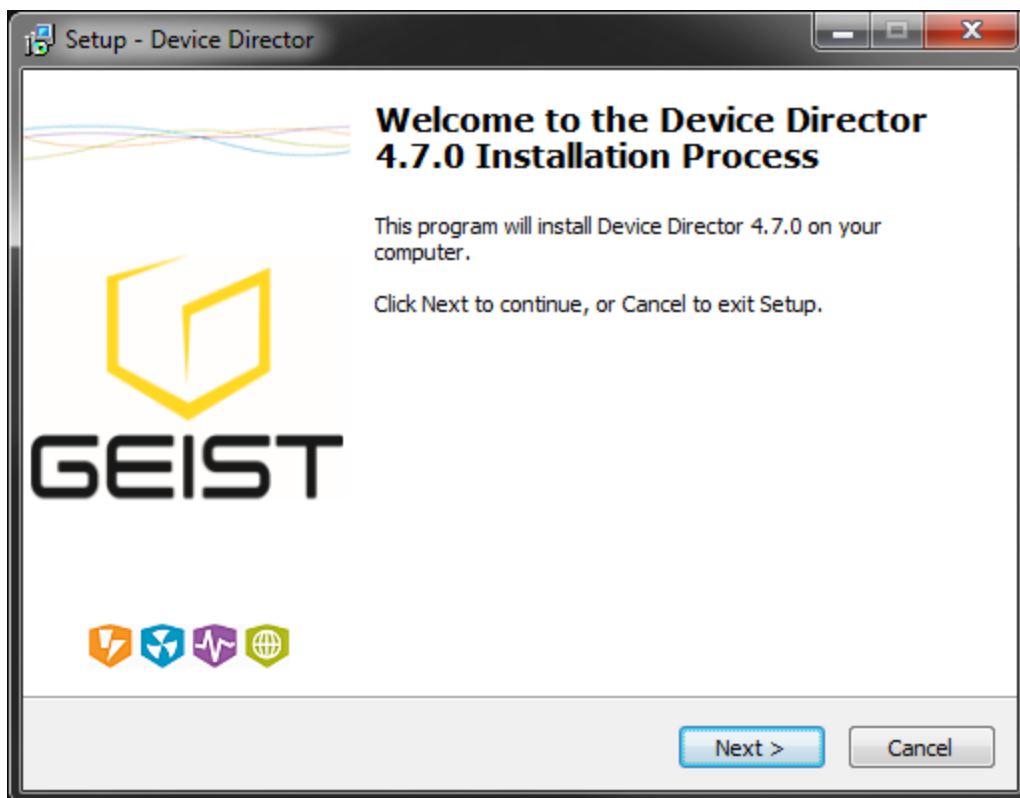
© 2017 - Geist, a division of
PCE, Inc. All Rights
Reserved Rev
07/31/2017

Chapter 1 - Overview

Thank you for downloading Device Director. This guide outlines step-by-step installation and configuration guidelines. Additional support information is available online at geistglobal.com.

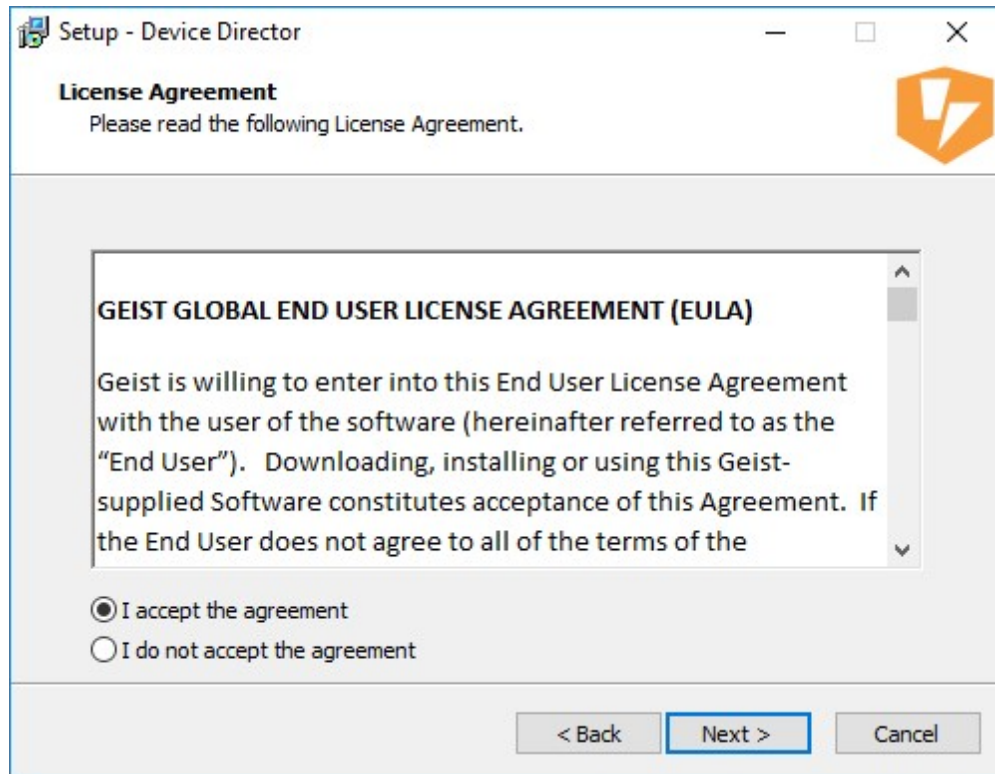
Chapter 2 - Installation

1. To install Device Director, double-click on your executable file (i.e. “DeviceDirector-4.7.0_setup_x64.exe”).
2. Welcome
 - a. On the first screen, click “Next”.



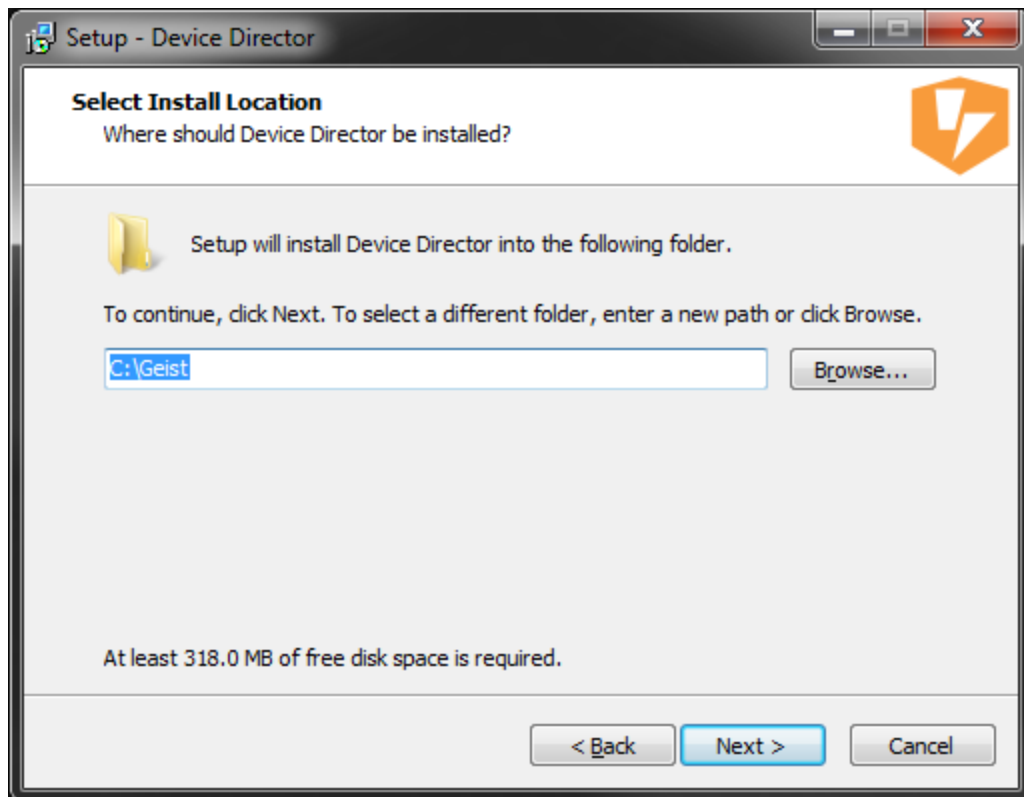
3. License Agreement

- a. Read the Geist Global End User License Agreement (EULA). Once you agree, select “I accept the agreement” and click “Next”.

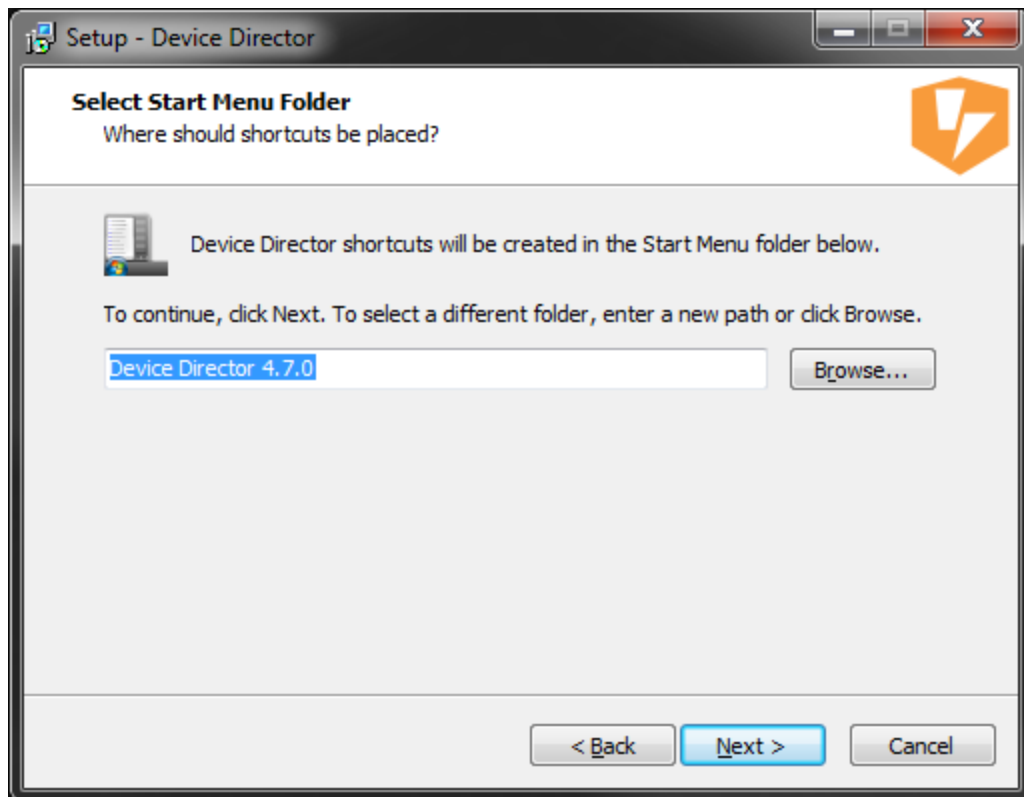


4. Select Install Location

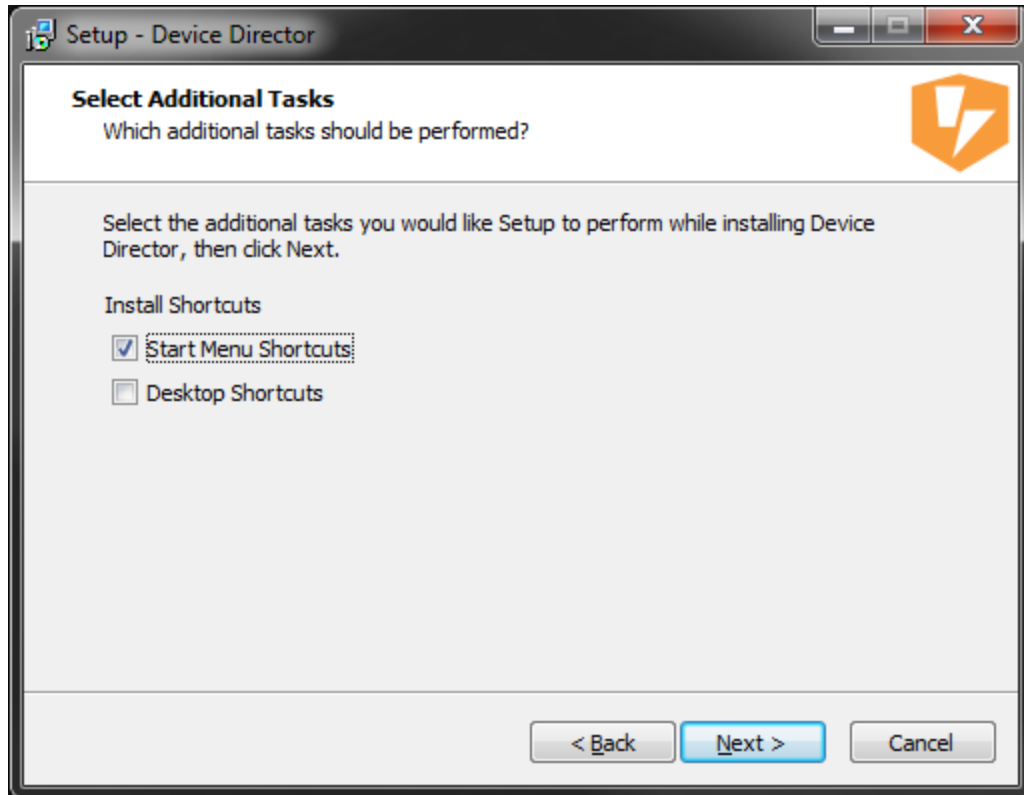
- a. If you wish to install Device Director to another location, type the location in the text box or use the “Browse” button to select a different directory.
- b. It is recommended to use the default installation directory.
- c. Select “Next”.



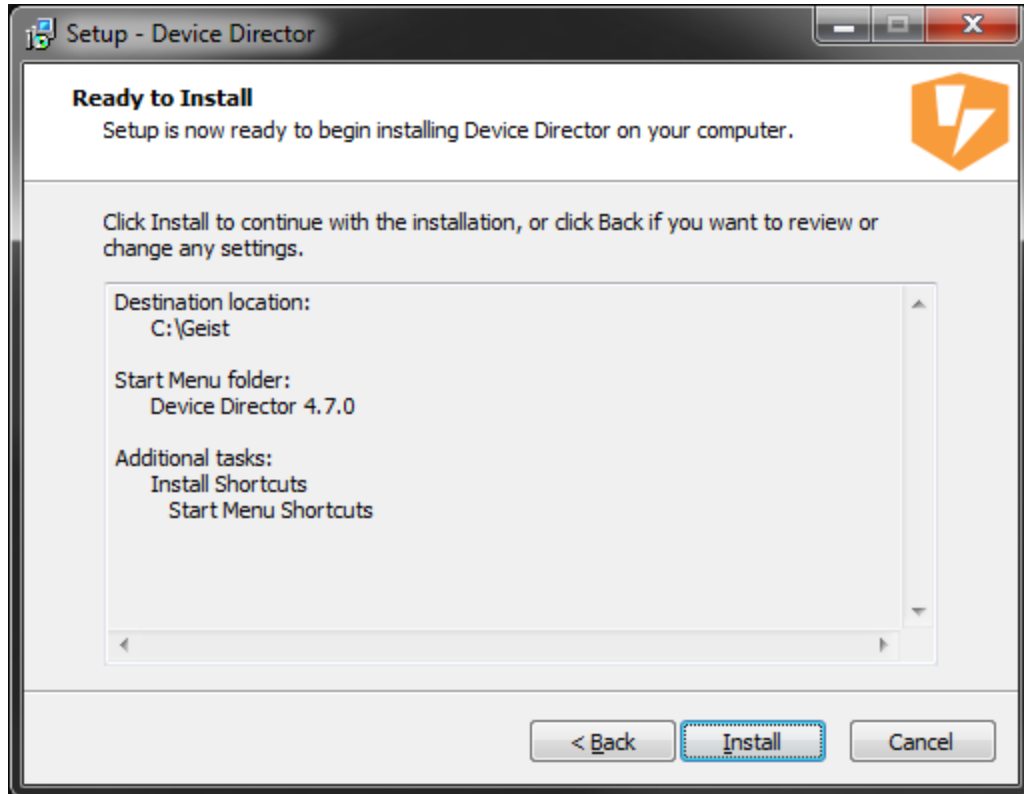
5. Select Start Menu Folder
 - a. If you wish to install Device Director shortcuts to another location, type the location in the text box or use the “Browse” button to select a different directory.
 - b. It is recommended to use the default start menu folder.
 - c. Select “Next”.



6. Select Additional Tasks
 - a. Select whether you would like Start Menu Shortcuts and/or Desktop shortcuts.
 - b. Click “Next”.



7. Ready to Install
 - a. Review your options. Click “Back” and revise your options, if needed.
 - b. If options are correct, click “Install”.



8. Finished
 - a. Once installation is complete, click “Finish”.



Installation of Device Director is complete. To run Device Director, double click on the shortcut on your desktop or in your start menu.

Chapter 3 - Technical Support

<http://geistglobal.com>

Americas

- +1 888 630 4445

Europe and Middle East

- From within the UK 0845 026 3853
- From abroad +44 845 026 3853

Asia

- English +1 888 630 4445 (US number)
- Chinese +86 755 8663 9505

Email: support@geistglobal.com or contact your distributor

Technical Support Form: <http://www.geistglobal.com/Tech-Support>



**Thank You For
Purchasing Geist**

geistglobal.com

