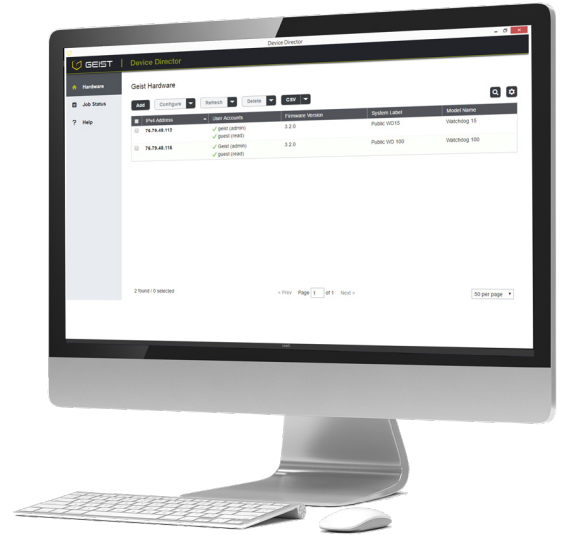


## Device Director

Device Director is a comprehensive, Windows-based utility that is used to install, configure and maintain multiple Geist devices on a given network. The suite of useful tools helps users quickly set the IP addresses of multiple devices, modify multiple network configurations of multiple Geist devices, upload firmware to multiple devices, export/import configuration files and validate device connectivity. Device Director gives installers a powerful and easy way to mass configure devices and it effectively reduces setup and maintenance costs.

### Features

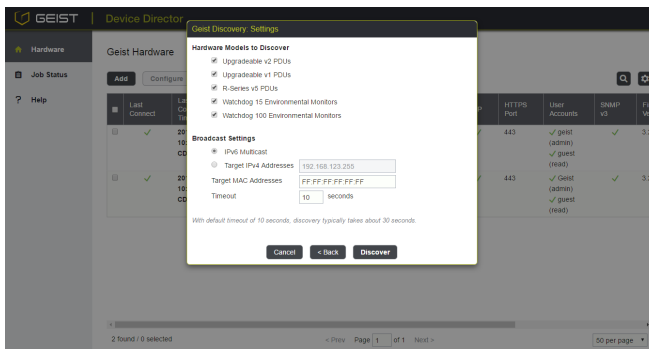
- Automatic discovery of Geist devices on the network\*
- Mass configuration of device and network settings
- Mass firmware updates to user-selectable devices



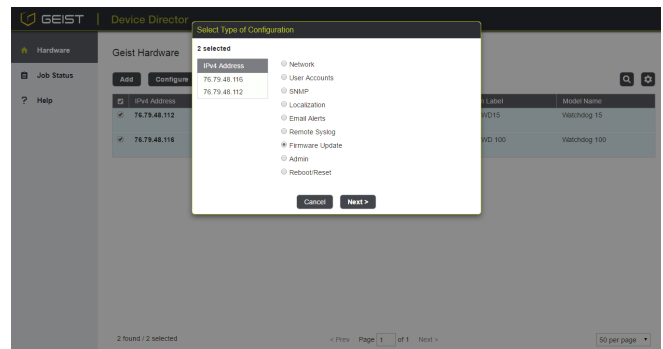
Device Director main view

### System Requirements

CPU	2 GHz or faster dual core CPU
RAM	2G or more
Hard Disk Space	1 GB
OS	Windows 7 (64-bit), Windows 8 (64-bit), Windows 10 (64-bit), Windows Server 2008 (64-bit), Windows Server 2012 (64-bit), Windows Server 2012 R2, Windows Server 2016



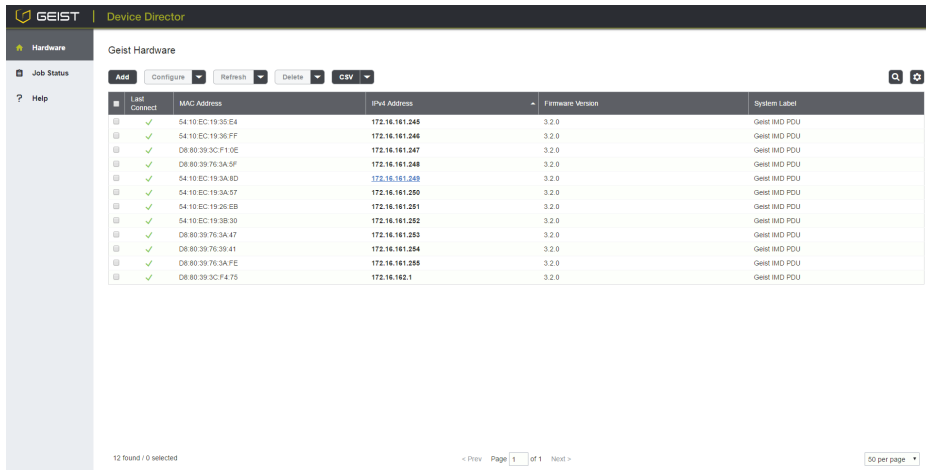
Automatic discovery of Geist devices on the network



Mass configure settings on user selectable devices

\*refer to compatibility chart on the following page to verify firmware requirements

# Device Director



Customize your very own Device Director dashboard

## Compatibility

Device Director may be used with Geist Upgradeable and R-Series v3/v4/v5 PDUs, as well as Watchdog 15/100/1000/1200/1250/1400 environmental monitors.

	Geist Discovery	Import by IPv4 Address	Firmware Updates	Edit Settings
<b>Geist Upgradeable v2</b>				
5.3.x and higher	✓	✓	✓	✓
<b>Geist Upgradeable v1</b>				
3.4.x and higher	✓	✓	✓	✓
2.1.x-3.3.x		✓	✓	✓
2.0.x		✓	✓	
<b>R-Series v5</b>				
5.2.x and higher	✓	✓	✓	✓
5.0.x-5.1.x		✓	✓	✓
<b>R-Series v4</b>				
4.3.x-4.4.x		✓	✓	✓
<b>R-Series v3</b>				
3.15.x-3.16.x		✓	✓	
<b>Watchdog 15/100</b>				
3.4.0 and higher	✓	✓	✓	✓
3.0.x-3.3.x		✓	✓	✓
<b>Watchdog 1000/1200/1250/1400</b>				
3.15.x-3.16.x		✓	✓	