

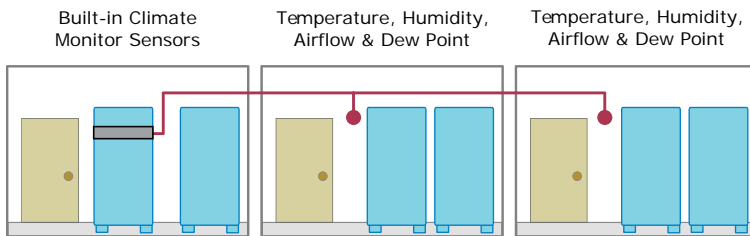
RTAFHD3

Part Number: RTAFHD3-12/20/25/50/100

RTAFHD3 (Remote Temperature, Airflow, Humidity, Dew Point) is an all-in-one sensor providing multiple remote environment readings as a complete package.

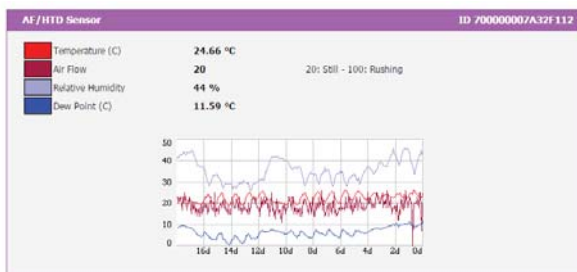
- Provides measurements for temperature, humidity, air flow and dew point
- Accurate and compact, easy to install
- Compatible devices support up to 4 or 16 sensors, depending on model
- Get alerts via email, SNMP and/or phone call*

Built to remotely monitor computer cabinet or server room conditions, the RTAFHD3 contains sensors for determining temperature, humidity, air flow and dew point. Set multiple alarms and get alerts via email, SNMP or voice phone call*. Up to 4 or 16 sensors can be attached to a Geist Climate Monitor, depending on model. Sensors can span a total cable distance of up to 600'.



Monitoring several locations with a Geist Climate Monitor and RTAFHD3 sensors.

Like other digital sensors, RTAFHD3 sensors communicate with a Geist Climate Monitor through a serial protocol. When the sensor is plugged into a digital sensor port, the monitor automatically detects and identifies the sensor. Each sensor can be given a "friendly" name for easy identification. Sensor readings are collected, logged and graphed by the Geist Climate Monitor along with alarm configuration and notification.

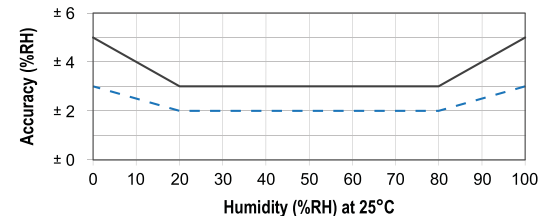
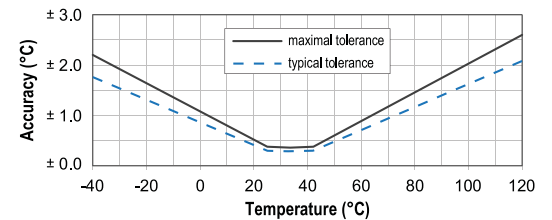


*voice-call alerts require auto-dialer accessory and a Climate Monitor equipped with relay outputs

Please note the information contained herein is for informational purposes only. Technical claims listed depend on a series of technical assumptions. Your experience with these products may differ if you operate the products in an environment which is different from the technical assumptions. Geist reserves the right to modify these specifications without prior notice. Geist makes no warranties, express or implied, on the information contained in this document.



A plastic tube contains the sensors and supporting circuitry. Connects to a digital port.



These graphs show sensor accuracy for temperature and humidity.

Sensor Details

Specifications

Temperature:
 Normal operating range: 5 to 60 °C (41 to 140 °F), 20-80% RH
 Maximum Operating Range: -40 to 85 °C (-40 to 185 °F), 0-100% RH
 Accuracy: +/-0.5 °C (0.9 °F), +/-2% RH (over normal operating range)
 +/-1 °C(1.8 °F) and +/-5% RH (outside of normal operating range)

Humidity: Normal operating range: 20% to 80% RH
 Accuracy (normal range): +/- 2% RH at 25°C
 Extended range: 0% to 100% RH

Dew Point: -40 to 185 °F (-40 to 85 °C)
 Air Flow: 0 to 100 (relative value)
 Cable type: Cat-3 with RJ-12 connector
 Cable length: 12', 20', 50', 100' or custom
 Warranty: 1 year

Compatibility

Works with all climate/power monitors with digital ports
 Geist Climate Monitor Series II units and Watchdog 1000-series units require firmware v3.5.0 or higher
 Original Geist Climate Monitor units require firmware v2.94 or higher
 16 sensors / 600' total cable length