



# Environet DCiM System

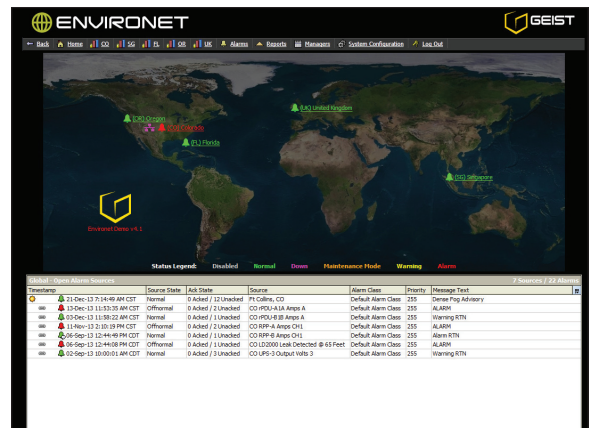
## What is Environet?

Environet provides the data granularity required for efficient management of the data center. With unprecedented visibility and management over environmentals, power consumption and cooling. Access to real-time, holistic information on assets, power, environment and process empowers users to proactively manage moves, adds and changes.

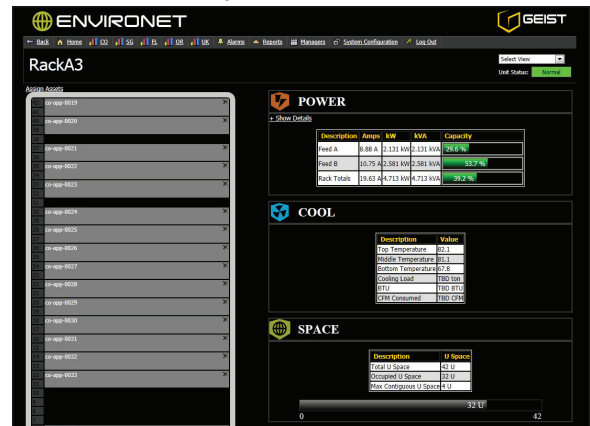
## Interactive Views

- **Global View** — Shows the status of all your facilities around the world.
- **Dashboard View** — Displays the top level of a facility. Includes: alarm sources, facility layout, company branding, weather conditions and key performance indicators.
- **Equipment View** — Represents each device with six status colors for at-a-glance monitoring.
- **Rack Level Graphics** — Quickly visualize critical power, cooling and space data at the rack level. Asset drag-and-drop functionality makes placing assets in the rack simple. Calculate how additions to each individual rack impact power and cooling requirements.
- **Energy Spectrum View** — Graphically represents the power density of each rack on a color-changing floor plan.
- **Floor Plan View** — Displays floor plans with color changing "hot spots" that represent temperature values. In addition, information on available U space, kW and temperature are one click away.
- **Rack Manager Views** — Allows for a centralized list view of all of the racks and their critical content. Easily sort by key performance indicators or dynamically search for a targeted rack within the data center.
- **Capacity Planning** — Allows assumptive loads and creates simulated views of the effects.
- **Side-by-Side Like Equipment Comparisons** — Compare information regarding capacity, load balancing and efficiencies across multiple pieces of similar equipment.
- **BMS Integration/HVAC Views** — Integrates fully with all major building management systems for display, trend and alarm for the collected information.
- **IT Asset Manager** — Track existing or future hardware and their unique asset details within one convenient screen. Add, edit, duplicate, or delete are all simple functions.
- **Event Analysis Reports** — Displays all data associated and recorded for a given event. View data before, during and after the event occurred.

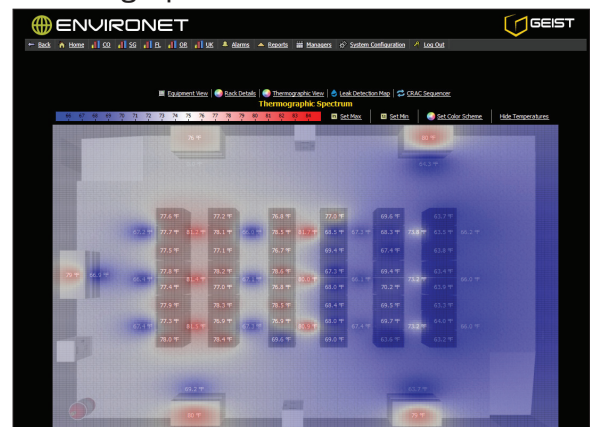
### Global View



### Rack Level Graphics



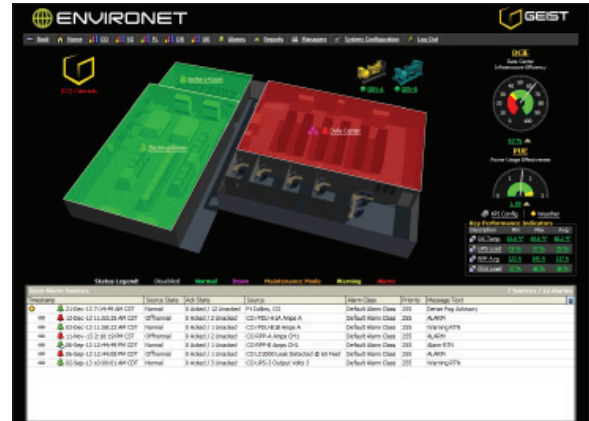
### Thermographic View



## Environet Features and Benefits

- **Automated Reports** — Automatically generates required reports saving time and decreasing human error associated with running reports.
- **Import Wizard** — For users who already track their assets, Environet offers quick and easy import of each individual asset. Itemized assets are added into the database and assigned to the specific rack and U space where they are installed.
- **Control Enabled** — Increases facility efficiency allowing users to more fully realize return on investment.
- **Custom Views of All Data** — Shows the most pertinent information based on individual monitoring needs for faster, more efficient data collection.
- **Extensive Trend and Historical Records** — No more manual measurements! Saves time by automatically collecting and logging important data points.
- **Full Alarm Management** — Gives users the flexibility to manage alarms remotely so no alarm goes unacknowledged.
- **Industry Leading Monitoring and Management Features** — Monitor your facility proactively rather than reactively. The extensive tool set allows users to recognize problem areas before they cause downtime.
- **Integration with All Major BMS and NMS** — Easily works with current systems so there is no need to replace expensive equipment.
- **Multiple Site Capable** — Gives users a holistic view of the enterprise for maximum efficiency.
- **Multiple User Based Views and Permissions** — Increases efficiency by personalizing what information is displayed during log in.
- **Scalable** — Additional data points are easily added when users need to expand.
- **Vendor/MFG neutral** — Works with existing equipment so users get reliable, efficient monitoring results.

## Facility View



### Tools

- Power One-Line Diagrams
- Power Capacity Planning
- Energy Cost Analysis
- Datacenter Documentation Storage
- Custom Reporting
- Custom Views
- Key Performance Indicators
- PUE/DCIE
- Unique Views Per User
- Tenant Billing Manager

### Supported Equipment

- Chilled Water Systems
- CRAC Units
- Utility Power Meters
- Switch Gear
- Generators
- Fuel Systems
- ATSS, STSS
- Fire Panels
- Leak Detection
- Battery Strings
- Rack PDUs
- RPPs, BCMs
- UPSs, PDUs

### Communication Protocols

- SNMP
- Modbus
- BACnet
- LONworks
- oBIX
- Hardwired I/O
- Niagara

Please note the information contained herein is for informational purposes only. Technical claims listed depend on a series of technical assumptions. Your experience with these products may differ if you operate the products in an environment which is different from the technical assumptions. Geist reserves the right to modify these specifications without prior notice. Geist makes no warranties, express or implied, on the information contained in this document. 10007001

### Geist Americas

800.432.3219  
geistglobal.com

Geist DCIM  
1.877.449.4150  
geistglobal.com

### Geist Europe

+44 (0) 1823 275100  
geistglobal.com

### Geist Asia

China  
+86.755.86639505  
geistglobal.com

Hong Kong  
+852 90361927  
geistglobal.com