

SA2-006 Installation Guide

SwitchAir Active Network Switch Cooling

Effective cool air delivery for front of rack mounted multi-RU switches with side air intake.

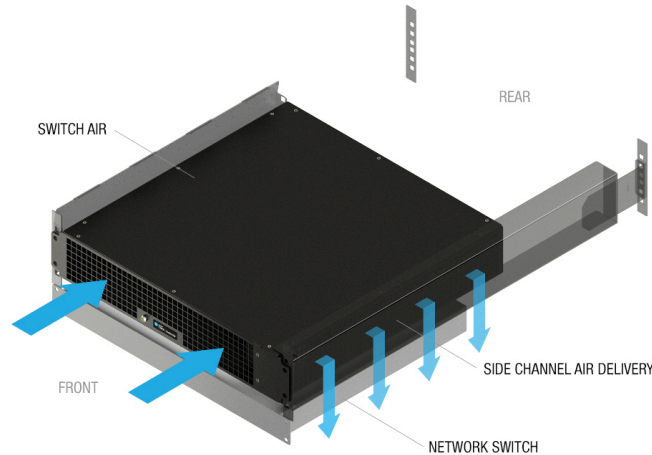


Installation Precaution:

- Install SwitchAir such that the required airflow for safe operation of equipment is not compromised.
- Take precaution to avoid interference with the switch input power cords when installing on a live unit.

SwitchAir Installed in Rack

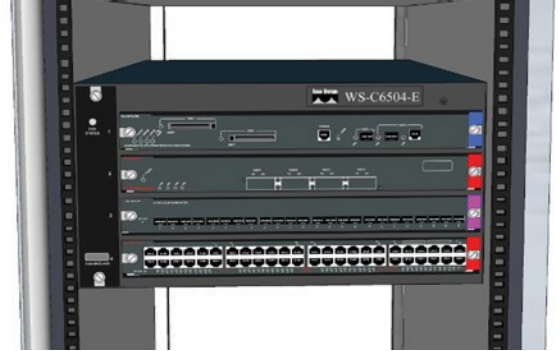
Installs in minutes while network switch is live.



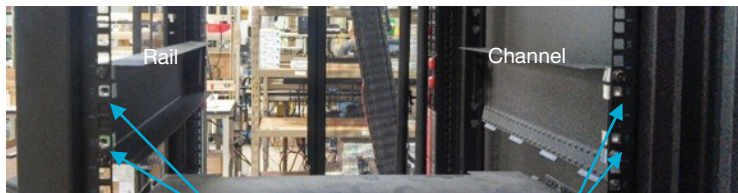
SA2-006 Specifications			
Rail Depth Range	26 5/8" to 29 5/8"	Airflow	188 CFM
Chassis Depth	18"	Switch Intake/Exhaust	Side
Channel Length	1-18" 2-26"	Safety/Approvals	UL, cUL 60950, CE, FCC Class A
Input Power/Indicator	90-264 VAC 50/60Hz 15 watts LED Power Indicator	Warranty	Two Years
Input Connector	C14		

Installing the SwitchAir

- (1) Before installing SwitchAir, insure that a full two RU of rack space is open directly above the device to be cooled. The unit can be alternatively mounted below the switch in which case a full two RU of rack space must be open below the switch.



- (2) Install support rail and air channel above or below device in the 2 RU of dedicated rack space.



Use Cage Screws to Mount Front Rail/Channel Using Top and Bottom Cage Knockouts

- (3) Slide chassis between rail and air channel and attach to rack used cage nuts and screws. Plug chassis power cord into power distribution unit. Installation is now complete.

